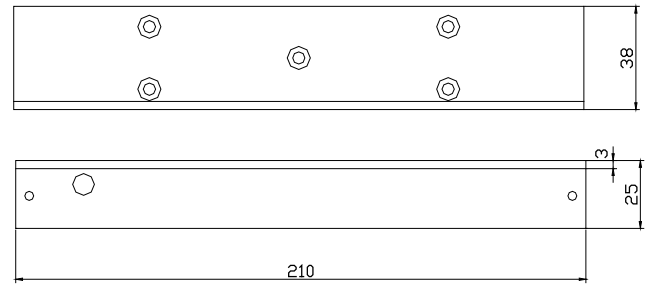
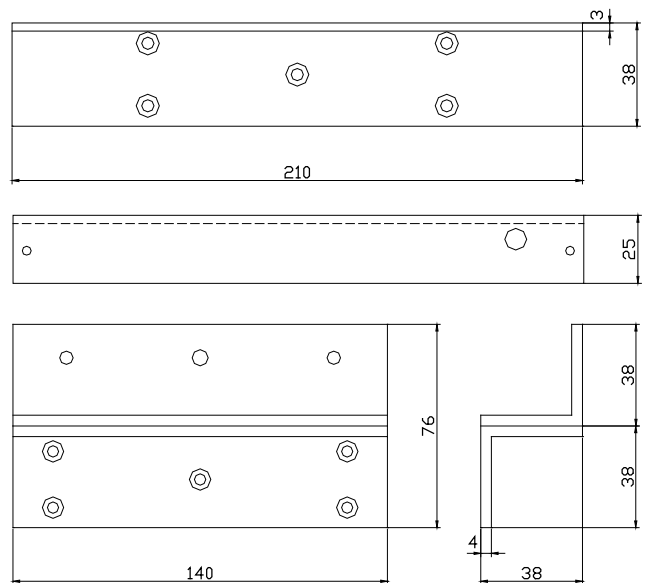




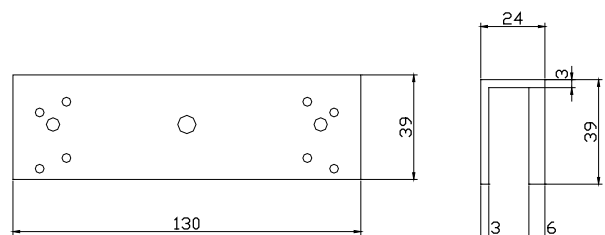
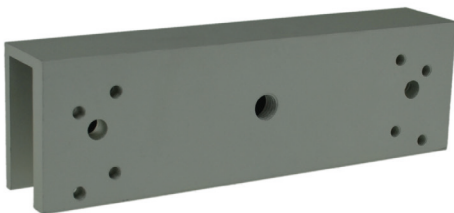
➤ EMS300L pour porte poussante



➤ EMS300ZL pour porte tirante



➤ EMS300U pour porte verre



	EMS300L	EMS300ZL	EMS300U
Application (voir page 106, 107)	Porte poussante	Porte tirante	Porte verre 10-13 mm
Matériel	Aluminium		
Dimensions (L x l x p)	210 x 38 x 25 mm	(Z) 140 x 76 x 38 mm (L) 210 x 38 x 25 mm	130 x 39 x 24 mm
Poids brut	0,15 Kg	0,46 Kg	0,2 Kg